

**KNAPHEIDE**  
SINCE 1848



FORD  
**CONCRETE BODIES**

# KNAPHEIDE CONCRETE BODIES



## CONCRETE BODY UNDERSTRUCTURE

PVMX platform base: 11-gauge high tensile strength steel cross sills on 18" centers with 5" structural C-Channel long sills.

\*Not shown - All bodies are undercoated to provide an extra layer of protection.

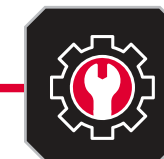
## CONCRETE BODIES

The Knapheide Concrete Body has everything a concrete contractor needs in a work truck. This rugged truck body gives you a multi-functional material rack, ample hauling space, secure storage and a fold-down tailgate for cargo access.

## POPULAR VOCATIONS



CONSTRUCTION



MUNICIPALITIES/  
UTILITIES



CONCRETE

**A. PVMX PLATFORM BASE:**

11-gauge high tensile strength steel cross sills on 18" centers with 5" structural C-Channel long sills

**B. SIDE AND END RAILS**

are constructed of 12-gauge high tensile strength steel

**C. TOOLBOXES:**

(1) above body and (1) underbody toolbox on each side of the body. (Toolbox size is dependent on platform length). Toolboxes include double panel door construction and 3-point T-handle latches

**D. SCREENED WINDOW BULKHEAD**

is contoured to conform to the lines of the cab, while offering maximum visibility

**E. ICC BUMPER**

for underside protection

**F. ALL LED CLEARANCE AND MARKER LIGHTS**

for visibility and added safety

**G. MATERIAL RACK**

is rated for 1,500 lb., is side forklift loadable, has swing-away rear cross bar and removable intermediate cross bars for loading taller items, and has tie down hooks to help secure your items

**H. 14" REMOVABLE SOLID STAKE SIDES**

secure within the platforms internal stake pockets

**I. 14" DROP DOWN REAR GATE**

double-panel contractor grade tailgate drops down a full 180 degrees for easy loading and unloading

**J. BLACK PAINT**

standard finish

**K. FULL-HEIGHT TAILBOARD**

at the rear of the above body toolboxes to separate the bed space



REQUEST A QUOTE



Visit [knapheide.com/quote](https://knapheide.com/quote) and fill out the form to receive a quote and additional product information.



PCCR-12DA  
\*Body may be shown with optional features

FEATURES NOT SHOWN

**ALUMINUM TREAD PLATE ROCK GUARDS**

installed on the front of each underbody toolbox

**ELECTRODEPOSITION PRIME-PAINT SYSTEM**

provides superior corrosion resistance

MODEL OPTIONS

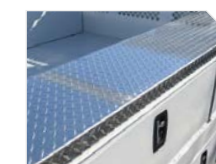
CONCRETE

BODY MODEL	BODY LENGTH	BODY WIDTH	CHASSIS APPLICATION	FINISH PAINT COLOR	FLOOR MATERIAL	ABOVE BODY TOOLBOX DIMENSIONS	UNDERBODY TOOLBOX DIMENSIONS
PCCR-9DA	111"	95.75"	F-350-F-550 DRW	Black	1/8" tread plate steel	60"x18"x18"	36"x18"x18"
PCCR-12DA	147"	95.75"	F-350-F-550 DRW	Black	1/8" tread plate steel	96"x18"x18"	60"x18"x18"
PCCR-14DA	171"	95.75"	F-350-F-550 DRW	Black	1/8" tread plate steel	96"x18"x18"	60"x18"x18"

POPULAR OPTIONS



8' UNDERBODY STORAGE COMPARTMENT



ALUMINUM TREAD PLATE TRIM

# COMMITMENT TO CORROSION RESISTANCE

Corrosion won't be a concern when you buy quality Knapheide products. To give you the best corrosion protection, we utilize a state-of-the-art, custom-designed, 12-step, SST cathodic electrodeposition finishing system, called "E-Coat."

It bonds prime paint to steel by an electroplating process to give you a superior coat of primer, resulting in better corrosion protection compared to spraying methods.

This system allows us to create products with the highest level of corrosion resistance available.



FOLLOW US  
LIKE US  
TAG US



## THREE YEAR, LIMITED TIME WARRANTY



NO RUST  
THROUGH



FREE FROM  
DEFECTS IN  
WORKMANSHIP



FREE FROM  
DEFECTS IN  
MATERIALS

TO LEARN MORE VISIT  
[www.knapheide.com/warranty](http://www.knapheide.com/warranty)



## NEVER SETTLE

If you are going to be a leader, it takes more than building a high-quality product. It means never being totally satisfied with that product, no matter how high quality it may be. It requires constant vigilance and a willingness to take a chance on something new. And it means exceeding expectations every time. As the industry changes, one thing never will—our commitment to making customers like you as productive and efficient as possible. We know you don't settle, and we don't either. That's why we want you never to settle for anything less than Knapheide on the back of your truck.

**KNAPHEIDE. NEVER SETTLE.**



The Knapheide Manufacturing Company  
1848 Westphalia Strasse | Quincy, IL 62305  
**217-222-7131**  
[www.knapheide.com](http://www.knapheide.com)